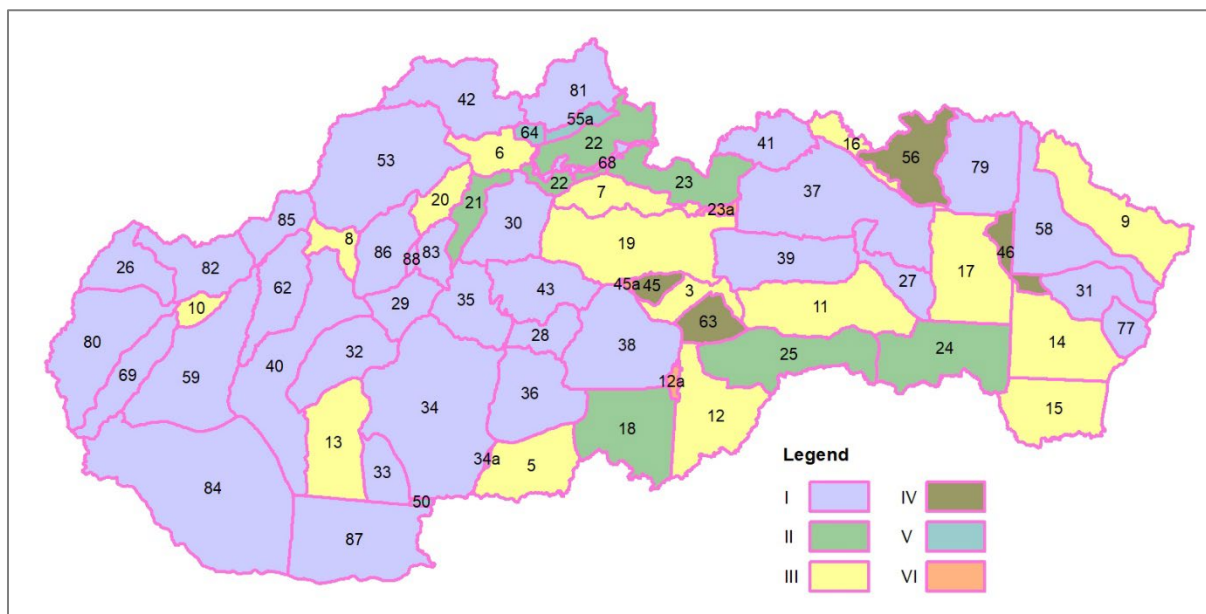


Overview of geological groundwork documents used at compilation of the Digital Geological Map of the Slovak Republic



I – Regional geological maps at scale 1:50,000 processed digitally on non-deformed topographic groundwork ; II – Regional geological maps at scale 1:50,000 processed by classical method on nondeformed topographic groundwork ; III - Regional geological maps M 1:50,000 processed by classical method on deformed topographic groundwork ; IV – Thematic geological maps at scale 1:50,000, peer reviewed; V - Geological maps at scale 1:50,000, updated; VI – Geological maps at scale 1:25,000, peer reviewed

- 3 Geological Map of the Slovenské rudohorie and Nízke Tatry Mts. (Slovenské Rudohorie - Centre, Nízke Tatry - East) (*Klinec, A., 1973*)
- 5 Geological Map of the Ipeľ Basin and Southern Part of the Krupina Plateau (*Konečný, V. et al., 1978*)
- 6 Geological Map of the Kysucké vrchy and Krivánska Malá Fatra Mts. (*Haško, J. & Polák, M. 1978*)
- 7 Geological Map of the Liptovská kotlina Depression (*Gross, P. et al., 1979*)
- 8 Geological Map of the Strážovské vrchy Mts. (*Mahel, M. et al., 1981*)
- 9 Geological Map of the Nízke Beskydy - Eastern Part (*Koráb T. et al., 1983*)
- 10 Geological Map of the Myjavská pahorkatina Upland, Brezovské and Čachtické Karpaty (*Began, A. et al., 1984*)
- 11 Geological Map of the Slovenské rudohorie Mts. (Eastern Part) (*Bajaník, Š. et al., 1984*)
- 12 Geological Map of the Rimavská kotlina Basin and Adjacent Part of the Slovenské rudohorie Mts. (*Elečko, M. et al., 1985*)
- 12a Geological Map 1:25,000, map sheet Pokoradz (*Lexa, J., 2004*)
- 13 Geological Map of the Podunajská nížina Lowland – NE Part (*Harčár, J. et al., 1988*)
- 14 Geological Map of the Northern Part of the Východoslovenská nížina Lowland (*Baňacký, V., 1988*)
- 15 Geological Map of the Southern Part of the Východoslovenská nížina Lowland and Zemplínske vrchy Mts. (*Baňacký, V. et al., 1988*)

- 16 Geological Map of Pieniny and Čergov Mts., Ľubovnianska vrchovina and Ondavská vrchovina Uplands (*Nemčok, J. et al., 1990*)
- 17 Geological Map of the Slanské vrchy Mts. and Košická kotlina Depression – Northern Part (*Kaličiak, M. et al., 1991*)
- 18 Geological Map of the Lučenská kotlina Depression and Cerová vrchovina Upland (*Vass, D. et al., 1992*)
- 19 Geological Map of the Nízke Tatry Mts. (*Biely, A. et al., 1992*)
- 20 Geological Map of the Lúčanská Malá Fatra Mts. (*Rakús, M. et al., 1988*)
- 21 Geological Map of the Turčianska kotlina Depression (*Gašparik, J. et al., 1993*)
- 22 Geological Map of Southern and Eastern Part of Orava (*Gross, P. et al., 1994*)
- 23 Geological Map of the Tatra Mountains (*Nemčok, J. et al., 1994*)
- 23a Geological Map 1:25,000, map sheet Poprad 3 (*Gross, P. et al., 1990*)
- 24 Geological Map of the Slanské vrchy Mts. and Košická kotlina Depression – Southern Part (*Kaličiak, M. et al., 1996*)
- 25 Geological Map of the Slovenský kras Mts. (*Mello, J. et al., 1996*)
- 26 Geological Map of the Chvojnická pahorkatina Upland and Northern Part of the Borská nížina Lowland (*Bañacký, V. et al., 1996*)
- 27 Geological Map of the Branisko and Čierna hora Mts. (*Polák, M. et al., 1996*)
- 28 Geological Map of the Poľana Mts. (*Dublan, L. et al., 1997*)
- 29 Geological Map of the Vtáčnik Mts. and Hornonitrianska kotlina Depression (*Šimon, L. et al., 1997*)
- 30 Geological Map of the Veľká Fatra Mts. (*Polák, M. et al., 1997*)
- 31 Geological Map of the Vihorlatské and Humenské vrchy Mts. (*Žec, B. et al., 1997*)
- 32 Geological Map of the Tribeč Mts. (*Ivanička, J. et al., 1998*)
- 33 Geological Map of the Danube Lowland – Eastern Part (*Nagy, A. et al., 1998*)
- 34 Geological Map of the Region Štiavnické vrchy Mts. and Pohronský Inovec Mts. (*Konečný, M. et al., 1998*)
- 34a Štiavnické vrchy Mts. and Ipeľská kotlina Basin (*Konečný, V. et al., 2004*)
- 35 Geological Map of the Kremnické vrchy Mts. (*Lexa, J. et al., 1998*)
- 36 Geological Map of the Javorie Mts. (*Konečný, V. et al., 1998*)
- 37 Geological Map of the Popradská kotlina Basin, Hornádska kotlina Basin, Levočské vrchy Mts., Spišsko-šarišského medzihorie Depression, Bachureň Mts. and Šarišská vrchovina Highland (*Gross, P. et al., 1999*)
- 38 Geological Map of the Slovenské rudohorie Mts. – Western Part (*Bezák, V. et al., 1999*)
- 39 Geological Map of the Slovenský raj, Galmus Mts. and Hornád Depression (*Mello, J. et al., 2000*)
- 40 Geological Map of the Danube lowland - Nitrianska pahorkatina Upland (*Pristaš, J. et al., 2000*)
- 41 Geological Map of the Spišská Magura Region (*Janočko, J. et al., 2000*)
- 42 Geological Map of the Kysuce Region (*Potfaj, M. et al., 2002*)
- 43 Geological Map of the Starohorské vrchy Mts., Čierťaž Mts. and Northern Part of the Zvolenská kotlina Depression (*Polák, M. et al., 2003*)
- 45 Geological Map – Fabova hoľa Area. M 1: 50,000. Thematic Geological Map (*Madarás, J. et al., 1999*)
- 45a Geological Map 1:25 000, map sheet Pohronská Polhora – 1 (*Ivanička, J. et al., 1986*)
- 46 Thematic Geological Map 1:50,000 (Vranov - Humenné - Strážske) (*Karoli, S. et al., 2000*)
- 49 Surface Geological Map of the Danube Region, 1:50,000 (DANREG) - manuscript, SGIDŠ archive (*Pristaš, J. et al., 1992*)

- 50 Updated Geological Map - Kováčovské kopce – Burda (*Konečný, V. et al., 2004*)
- 53 Geological Map of the Middle Váh Valley Region (*Mello, J. et al., 2005*)
- 55a Updated Geological Map - Northern Orava (*Potfaj, M. et al., 2005*)
- 56 Čerchov Mts. and Western Part of the Ondavská vrchovina Upland (*Stránik, Z. et al., 1965*)
- 58 Geological Map of the Nízke Beskydy Mts. – Central Part (*Žec, B. et al., 2006*)
- 59 Geological Map of the Region of the Trnavská pahorkatina Upland (*Maglay, J. et al., 2005*)
- 62 Geological Map of the Považský Inovec Mts. and SE Part of the Trenčianska kotlina Depression (*Ivanička, J. et al., 2007*)
- 63 Thematic Geological Map 1:50,000 (Region Jelšava - Lubeník - Hnúšťa) (*Bezák, V. et al., 1996*)
- 64 Updated Geological Map – Zázrivá (*Potfaj, M. et al., 2005*)
- 68 Lithofacies Division of the Borové Fm. of the Subtatric Group (Orava Palaeogene) (*Filo, I. et al., 2009*)
- 69 Geological Map of the Malé Karpaty Mts. (*Polák, M. et al., 2011*)
- 77 Updated Geological Map of the Quaternary of the SE Part of the Východoslovenská nížina Lowland at the Popriečny and Vihorlat contact (*Kučera, M. et al., 2008*)
- 79 Geological Map of the Nízke Beskydy Mts. – Western Part (*Kováčik, M. et al., 2011*)
- 80 Geological Map of the Záhorská nížina Lowland (*Fordinál, K. et al., 2012*)
- 81 Geological Map of the Biela Orava Region (*Teták, F. et al., 2016*)
- 82 Geological Map of the Biele Karpaty Mts. (southern part) and Myjavská pahorkatina Upland (*M. Potfaj & F. Teták, 2014*)
- 83 Geological Map of the Žiar Mts. (*M. Kováčik et al., 2015*)
- 84 Geological Map of the Danube Lowland – Danube Flat (*J. Maglay et al., 2018*)
- 85 Geological Map of the Biele Karpaty Mts. (northern part) (*I. Pešková & F. Teták, 2021*)
- 86 Geological Map of the Strážovské vrchy Mts. (eastern part) (*Ľ. Hraško & M. Kováčik, 2021*)
- 87 Geological Map of the Danube Lowland - (south-eastern part) (*Fordinál, K. et al., 2022*)
- 88 Geological Map of Quaternary sediments between the Nitra River and the Malomagur fault zone (*Maglay, J. & Vitovič, L., 2023*)